

# Arrowbear Music Camp

## Intro Intermediate Session!

June 28-July 4, 2026



### Session Information Packet



#### Pre Camp Checklist

- June 15- Balance due and online Medical Form completed
- June 22- Please have Musical Intro video completed and uploaded
- Packing list double checked
- Medications and original medication container ready to turn in
- Get ready to have an AMAZING time!!!

#### Packet Contents

Arrival & Departure Information

Address & Driving Directions

Tuition Balance

Medical Form & Medications

General Camp Information-

- Musical Introduction
- Mail
- Email
- Cell phones
- Online camp photo album
- Camp group photo and roster
- Housing
- Laundry
- Visitors
- Camp Store

Packing List

#### Information at a glance

- Camp office phone: 909-867-2782
- Larke Dockstader's cell phone:  
562-225-7766
- June 15th: session balance and health form due
- June 28th: Arrival, check in falls between 2:00pm and 3:15pm. Your assigned arrival time can be found in the email accompanying this packet.
- July 4th: Pick up day-1pm concert
- Camp's mailing address: PO Box 180, Running Springs, CA 92382
- Camp's physical address 33500 Music Camp Rd., Arrowbear Lk, CA 92382

# Arrival and Departure Information:



## First Day of Camp– June 28th

Check in falls between 2:00pm and 3:15pm. Your assigned arrival time can be found in the email accompanying this packet. Please refer to it to help us keep the check-in process running smoothly.

When you arrive, head to the camp porch check-in station. Here's what to expect:

### **Sign In:**

Make a name tag, turn in snack bar cash (if any), pay remaining balance, and hand in cell phone.

### **Medical Check-In:**

Screening, temp check, and medication drop-off with the Health Supervisor.

### **Lice Screening:**

Quick and private check with a friendly counselor.

After check-in, campers will say goodbye to family and join a counselor-led group for the first mixer activity.

## Last Day of Camp– Saturday, July 4th

Our closing concert will be held on campus at 1:00 PM.

Guests are welcome to arrive anytime after 11:30 AM to visit with campers and load luggage. Please do not arrive earlier, as camp programming will still be in session.

We'll have outdoor bench seating available for the concert. You're also welcome to bring a picnic and folding chairs for a more comfortable setup.

Parking is limited. On concert day, we use all available areas, including stacking cars. Staff will be on hand to help direct traffic.

Thank you for your patience with our parking lot. We truly appreciate it!

### **Interested in Carpooling?**

Let us know! We're happy to share your name, contact info, and general location with other families from the Intro Intermediate Session to help coordinate rides.



# Address and Driving Directions to Camp

Physical address: 33500 Music Camp Rd, Arrowbear Lk, CA 92382

## First Time Visiting?

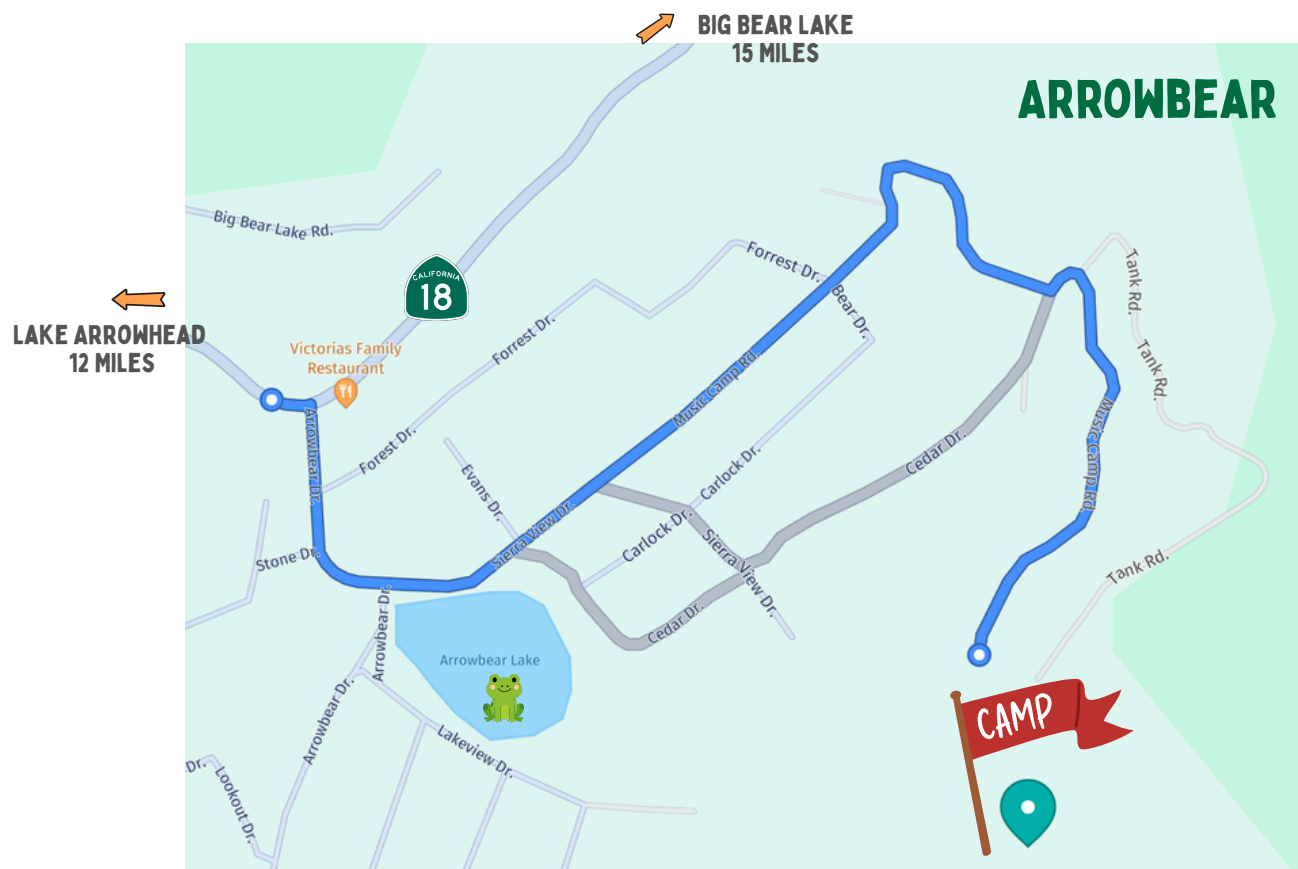
If you haven't been to camp before, please bring a copy or screenshot of the directions—we recommend not relying solely on GPS, as the directions can be inaccurate the last ½ mile

## Driving Directions

- From **I-210 in Highland**, take **Highway 330** toward Big Bear
- Drive up the mountain and continue through **Running Springs** and **Arrowbear**
- Turn **right at the second Arrowbear Drive** (look for Victoria's Family Restaurant on the corner).

*If you see signs for Green Valley Lake or Snow Valley Ski Resort, you've gone too far*

- Stay **to the left of the small pond** (may be dry by the end of June)
- Continue up **Music Camp Road** (or alternatively, right at Sierra View → left at Cedar Drive, sharp right at Music Camp Road)  
*Careful to avoid a wrong turn on Tank Road- it is very narrow and steep*
- You will know you have made it when you reach the large **green and brown "Arrowbear Music Camp" sign**. 😊
- Follow signs to the **check-in station** upon arrival.



# Tuition Balance

Payment is due in full by June 15th.



## Medical Form & Medications

Please make sure your online medical form is completed and up to date by June 15th. You can access the form directly from your parent login:

[Medical Form Link](#)

Find it anytime in the Document center after logging in to the parent portal.

Our Camp Health Supervisor will review the form with you during check-in.

**All medications**, including over-the-counter items, **must be turned in at check-in**. This is required by law and is essential for camper safety.

- Medications **must be in their original, labeled containers**.
- If using a daily pill organizer, you **must also bring the original prescription bottle** for reference.
- Unlabeled or loose medications will not be accepted or administered.

## General Camp Information:

### Musical Introduction

In order for us to get to know your playing level and ensure you are placed where you will learn and thrive, please upload a video recording playing the examples listed below as you are able. Please say your name, and which camp session you will be attending. Camp is a supportive and noncompetitive environment. We're all here to grow as musicians!

**Click Here to Upload your Video** (<https://www.dropbox.com/request/S2OAH1glwLiTnXew0ZK4>)

In preparation, please review the following as appropriate for your instrument:

### Strings

- C, G, D, F, and Bb major scales – as many octaves as you can play confidently
- A short excerpt from a current solo or orchestral work

### Winds

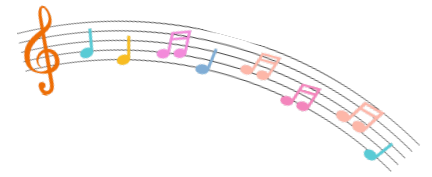
- Bb, F, Eb, G, and D major scales 1–2 octave chromatic scale
- Demonstration of one fast and one slow excerpt (can be from any solo or ensemble work)

### Percussion

Don't worry if you haven't covered all these yet—we'll teach you at camp!

- Snare drum technique
- Mallet instrument experience
- Timpani tuning and technique

# Communication with your camper



## Old fashioned snail mail

Campers love receiving mail during their time at camp!

You can send letters to:

### Camper's Name

c/o Arrowbear Music Camp

P.O. Box 180

Running Springs, CA 92382

Note: Any mail that arrives after the session ends will be forwarded to the camper's home address.

### Want to plan ahead?

Family and friends are also welcome to drop off letters or small packages at the camp office to be delivered on a specific day. You will see a drop off "Camper Mail" box sitting near the check in table. Please label them clearly with the camper's name and preferred delivery date.

## Emailing Your Camper

You can send one-way emails to your camper through your online account.

Here's how:

1. Log in to the [Parent Portal](#)
2. From the left-hand menu, select "Message Center"
3. Click "Email a Camper"

Emails are printed and delivered to camper mailboxes along with the daily mail.

Note: Campers do not have access to respond to emails while at camp.

## Cell Phones

Campers may bring a cell phone to camp, but **phones must be turned in during check-in** and will be stored securely in the camp office.

Please **label the phone with the camper's name** and make sure it is **powered off** when turning it in.

### Phone Use Schedule:

Phones may be checked out between 3:00–3:30 PM.

Campers without a phone who wish to call home may use the camp office phone or a staff phone during these times.

We've found that campers (and staff) have a more meaningful and connected experience when screens are set aside. This week will go by quickly so we encourage everyone to be fully present!



## Online Camp Photo Album

We'll be posting photos to your online account starting Monday afternoon. Checkback daily for new photos.

To view:

1. Log in to the [Parent Portal](#)
2. Select "Photo Gallery" from the left-hand menu

You can also follow along with camp life on social media:

[instagram.com/arrowbearmusiccamp](https://www.instagram.com/arrowbearmusiccamp)

[facebook.com/ArrowbearMusicCamp](https://www.facebook.com/ArrowbearMusicCamp)

(Links are also available on our website)

## Commemorative Photo and Camp Roster (the 'note')

At the end of the session, each camper will receive a group photo and a roster with contact information for fellow campers and staff. A great way to stay in touch after camp!

Campers can choose what information they'd like to include. The roster typically includes:

- Name
- Instrument
- City
- Phone number
- Social media handle(s)

During check-in we will collect camp roster information.

If you'd prefer that any of your camper's information not be shared, please let us know during check-in or anytime before Tuesday, June 30<sup>th</sup>.

## Housing

Housing at camp is barrack-style. Most campers live out of their suitcase or backpack during their stay. However, we do provide footlocker trunks and a limited number of cubbies throughout the dorm for additional storage.

## Laundry

We have one cold-water washing machine available for camper use, along with unscented laundry pods and a clothesline for drying.

This setup is intended for occasional or emergency use during the session.

## Visiting Policy

For the safety and privacy of all campers, please contact the camp office in advance if you plan to visit during the session.



## Camp Store

During free time, campers can visit our camp store, which offers a small selection of snacks and Arrowbear gear.

How It Works:

Campers use a store debit account—no cash is kept on hand. Any unused funds will be returned in cash on the last day of camp.

To add funds:

- Log into the [Parent Portal](#)
- from the left-hand menu select “Camp Store” and “Store Deposits”
- We also accept cash, check, money order (made out to Arrowbear Music Camp), or credit card online

During the session, your camper’s account will be updated daily with a current total Suggested Amount for a 1 Week Session: \$10–\$50

Sample Prices:

- Snacks/Soda: \$1–\$5
- T-shirts: \$20
- Sweatshirts: \$30–\$40
- Other Camp Gear: \$3–\$35

Concert Day:

The camp store will also be open before and after the final concert, and credit cards will be accepted at that time.

**We are looking forward to seeing you all!!!**





# Arrowbear Music Camp

## Packing List



### Clothing

Enough comfortable outdoor clothing for 7 days- Example:

- Jeans/ long pants
- Shorts/Skirts
- T-shirts/ tank tops
- Sweat shirt/ sweater
- Pajamas
- Socks
- Underwear
- Closed-toe shoes
- Bag or collapsible hamper to hold dirty clothing
- Concert clothes: slacks, khakis or skirts; blouse, polo, or other collared shirt

### Music Related

- Instrument, plus additional needed items (strings, reeds, mutes, etc.)
- Pencil with eraser
- Clothespins to hold music in on windy days
- Music and accompaniment if you plan on performing during optional activity times
- Any additional instruments you play that you may like to use for free time or optional performance time

### Optional

- Blanket
- Swimsuit
- Pool towel
- Hat
- Sunglasses
- Hiking shoes/ hiking gear
- Sandals
- Snack food in a labeled container
- Stamps and envelopes
- White clothing for tie-dying
- Camera
- Books
- Art supplies
- Headphones
- Games

### Miscellaneous

- Water Bottle-or purchase one at camp with our logo
- Flashlight or headlamp with red-light (for night hikes-optional)



### Toiletries

- Towel and washcloth for shower
- Shower sandals (flip flops)
- Toothbrush, toothpaste, floss
- Shampoo/conditioner and soap
- Sunscreen and chapstick
- Bug repellent
- Any other personal items you may need

### Bedding

- Warm Sleeping Bag- temps may drop below the 40's- please pack accordingly
- Pillow
- Fitted sheet (to cover vinyl mattress 72"x30)